



**Beartooth**

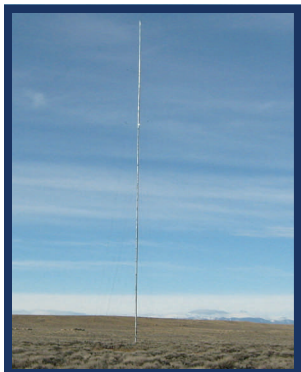
RESOURCE CONSERVATION AND DEVELOPMENT AREA, INC.

PO Box 180, 604 West Front Street, Joliet, MT 59041 406-962-3914 FAX 406-962-3647

# WARREN WIND PROJECT (RENEWABLE ENERGY)

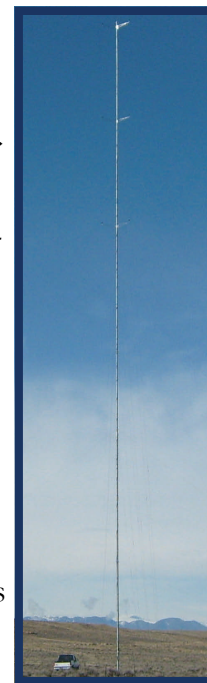


The Beartooth RC&D Area, Inc. along with an interested landowner submitted a proposal to conduct a one year wind feasibility study of the wind resource to estimate the potential for rural grazing lands located near Warren, Montana, as a first step to the development of a commercial scale wind farm in Carbon County, which has a population of less than 10,000 people. The first step of developing a wind power farm is to determine the potential of wind power on the site. The study focused on determining the frequency of distribution of average wind speeds by month and year.



### Expected outcomes:

- The study will employ local wind power consultants, local contractors, property owners and suppliers to implement and conduct the wind power feasibility study.
- The study will establish the potential for a commercial scale wind farm, establish wind power production potential and identify the infrastructure and utility interconnection requirements.
- Establish a major opportunity for rural economic development for many local property owners and if it reaches the construction phase is expected to create at least 12 good paying jobs.
- The feasibility study will estimate to what degree this project may contribute to meeting the state of Montana's renewable resource portfolio standard for renewable energy.



Funding was received from the United States Department of Agriculture - Rural Development, Rural Business Enterprise Grant to construct a 60-meter tower, with anemometers located at three different heights on the tower, to measure wind feasibility and provide data for wind analysis from the site. The tower was erected in the fall of 2008 and data have been collected for an entire year. The project was extended to July 2010 in order to collect additional data which will validate the information. The landowner has been actively marketing the wind data to potential wind development corporations.

